

## Navigation Lights

### Navigation Light & Signal Light

Daeyang Electric Company



#### A2-S Single Lens

Vessels of 20M and above in length in compliance with COLREG 1972

Visibility : Min. 3N.M, mast head 6N.M(Nautical mile)

Cover & body : Polycarbonate  
Lens : Polycarbonate

LENS COLOR ● ● ○ ●



#### A2-D Double Lens

Vessels of 20M and above in length in compliance with COLREG 1972

Visibility : Min. 3N.M, mast head 6N.M(Nautical mile)

Cover & body : Polycarbonate  
Lens : Polycarbonate

LENS COLOR ● ● ○ ●



#### IM-23/24 Morse Signal Light

Morse signal  
Body : Cast Brass  
Globe : Glass



A2L-DM06H

A2L-DP04H

A2L-DT04H

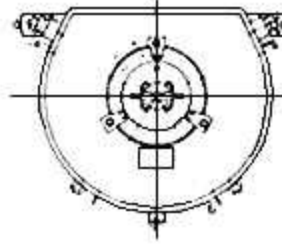
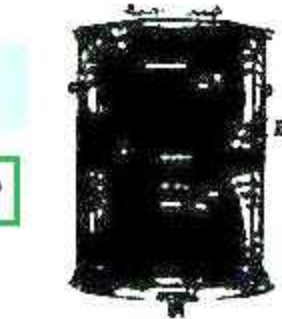
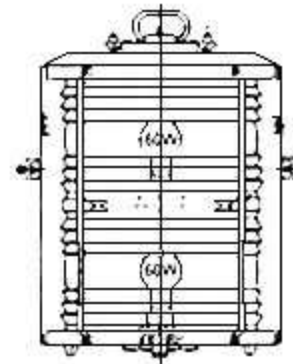
A2L-DY04H

#### Navigation Light Classification

Class	No. of Light	Application
A - 2	Double & Single	For vessels of 50 mtr or more in length
B - 1	Double & Single	For vessels of 20 mtr or more but less than 50 mtr in length
B - 2	Single	For vessels of less than 20 mtr in length
B - 3	Single	

### Class A-1

#### Glass Lens & Metal Case



Project Angle of Light

Unit Per Pc.

CODE	Item	No. of Light	Project Angle(°)	Visibility (n. m)	Bulb (Watt)	Weight (kgs)
37 04 01	Masthead light, clear	Double	225	Over 6	60	13.5
02	Side Light, Green (Starboard)					
03	Side Light, Red (Port)					
04	Stern Light, Clear					
05	Towing Light, Yellow	single	135	Over 3	40	11.5
06	White Light (Anchor Light)					13.0
07	Red Light (Not Under Command Light)					6.2
			360		60	6.9

### Class A-2

#### Polycarbonate Lens & Case



China Made



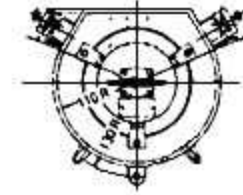
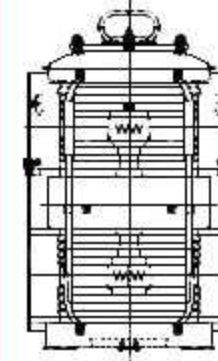
Masthead Light Side Light

White Light Red Light

Unit Per Pc.

CODE	Item	No. of Light	Project Angle	Visibility (n.m)	Bulb (Watt)	Weight (kgs)
37 04 21	Masthead Light, Clear	Double	225	Over 6	60	2.1
22	Side Light, Green (Starboard)					
23	Side Light, Red (Port)					
24	Stern Light, Clear					
25	Towing Light	single	135	Over 3	40	1.2
26	White Light (Anchor Light)					1.1
27	Red Light (Not Under Command Light)					60
28	Green Light					

#### Glass Lens & Metal Case



Unit Per Pc.

CODE	Item	No. of Light	Project Angle	Visibility (n.m)	Bulb (Watt)	Weight (kgs)
37 04 41	Masthead Light, Clear	Double	225	Over 6	60	6.2
42	Side Light, Green (Starboard)					
43	Side Light, Red (Port)					
44	Stern Light, Clear					
45	Towing Light	single	135	Over 3	40	5.3
46	White Light (Anchor Light)					3.4
47	Red Light (Not Under Command Light)					60
48	Green Light					

Note : White light, red light and green light are available for suspended or fixed.